

Customer :

customer

Customer part :

customer part

Comment :

Comment

S1=7.15

S2=7.22

Tmax=469

Tp S2=508.0

PI=0.5

HI=92

Sample =1753.80

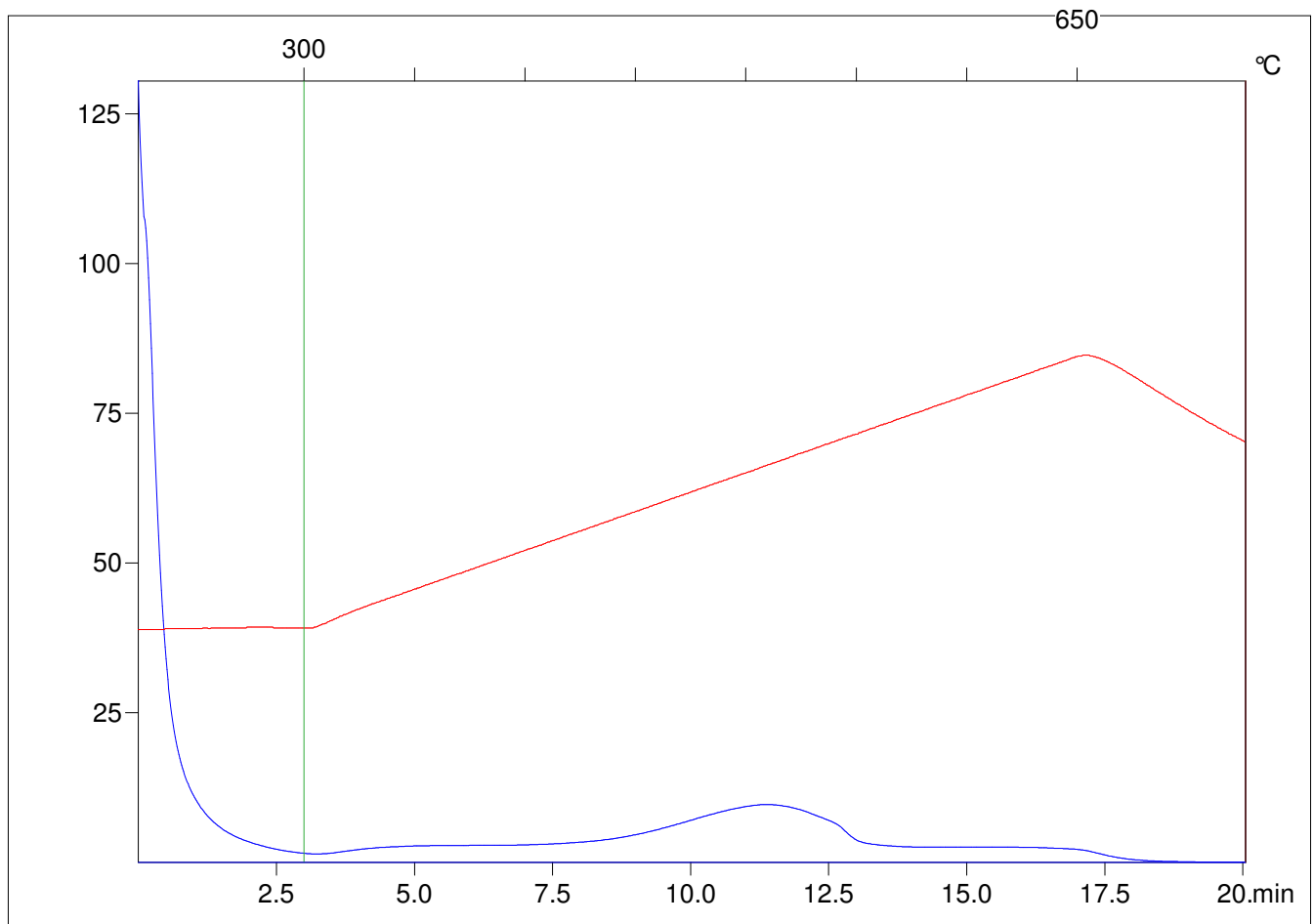
Method =Bulk Rock

Cycle=Basic

KFID(10*9)=1444

Qty =70.3

TOC=7.89



C:\VINC\PK3_1792\PK007.R00 : FID pyrolysis graphic

State Ok

Pyro Status Negative value

Oxi Status Negative value